

# Escape to Stacy Iest Hsu's Jungle Paradise

When Stacy Iest Hsu designed Jungle Paradise she wasn't imagining eluding a pandemic. "But it really does feel like an escape," she says of the line inspired by her honeymoon trip 17 years ago to Belize and Guatemala. "The colors make me so happy!"

She was thinking, however, about creating opportunities for kids to sew by themselves and with their moms, dads, grandparents, and others. And that turns out to be a good thing during a pandemic...or anytime.



STACY IEST HSU

"Learning to create something, through cooking or woodworking or sewing or playing music gets kids off screens, helps them implement the things they learn in school, and is beneficial all around," says Stacy.

Stacy's interest in helping kids learn to sew is a thread that's run through her more than 20 collections for Moda. Her designs are often inspired by the children's books she loved reading to her three children, two of whom are now teenagers. "It was my favorite time of day," says Stacy. "No one was fighting, everyone was peaceful, sometimes they'd be working on projects but they were still listening." Designing fabric enables Stacy to tell and illustrate stories, as well as to give kids (and adults) the materials and skills to be creative.

## Jungle Paradise



## Sewing to build skills... and for fun

As Stacy's gotten back into sewing—she did a lot of 4-H sewing as a child and teenager but stopped when she got busy with her young family—she was also reminded that it leads to a better understanding of math. “I’m a visual person and would rather freeform it, but with quilting you have to use rulers and math to make blocks fit,” she says. “I never really understood math until I started sewing more.”

Those math skills have come in handy, too, when she's writing and illustrating instructions for the cut-and-sew panels that accompany her lines. She strives to make the directions clear and understandable for newbies, but also include projects that are a little more challenging for experienced sewists. Jungle Paradise includes finger puppets and stuffed animals that can be sewn by beginners or as a quick gift for an adult to make. The cloth book with lift-up flaps is more challenging and provides a satisfying finished product.



## Confidence and resilience

In helping her children to learn to sew, Stacy remembers her own experience of worrying that she couldn't do buttonholes or zippers without her mom's help. So, Stacy imparted basic sewing skills, gave them supplies, and then let them run with it. Her daughter now creates her own clothing from patterns she drafts herself. “She wore a button-down shirt the other day that she made using fabric from my mom,” says Stacy, proudly. “She's not afraid to try and fail. She's totally my inspiration.”

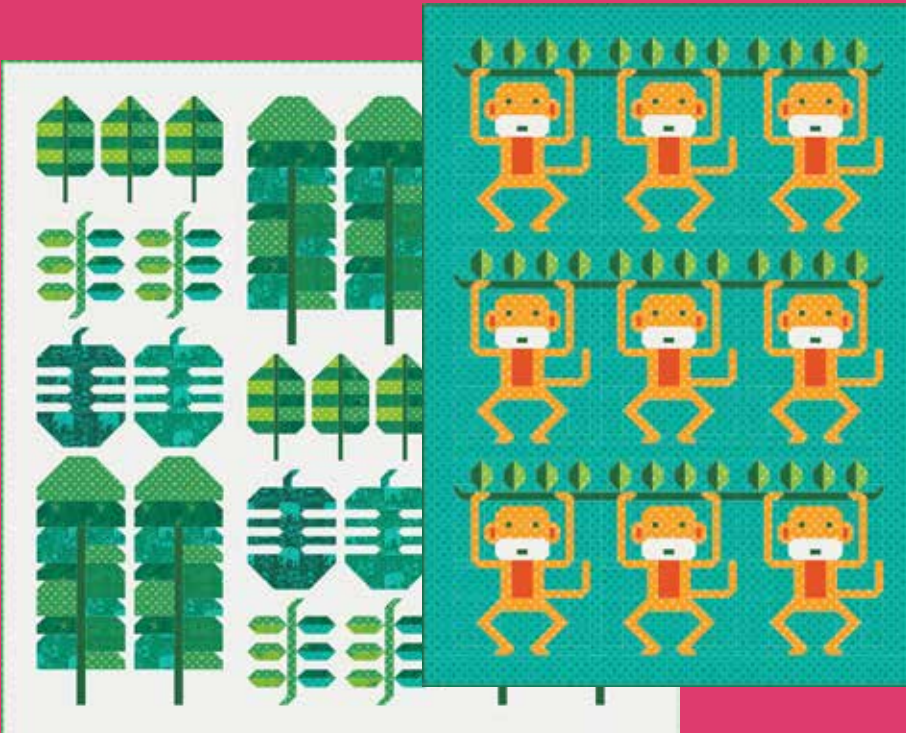
Stacy loves knowing her fabric lines help beginners build resilience and confidence through sewing, as well as gain skills that complement their school experiences. “I've heard kids going through the school system say ‘I don't know why I'm learning this or that,’” she says. “Imagine if middle school kids would take a class on designing and making a quilt—they'd learn math and come out with a quilt!”

# Jungle Paradise

STACY IEST HSU



SIH 059 Funny Monkey - 45" x 63"



SIH 061 Tropical Sampler - 76" x 76"



Wendy Sheppard

WS 14 Stomping Ground  
48" x 60" FQ Friendly

KIT  
20780



The lush green jungles and almost-blindingly bright colors of the wildlife still resonate some seventeen years after my husband and I honeymooned in Belize and Guatemala. Even after all this time, the memories are still so vivid they inspired this Jungle Paradise collection.

Tropical birds, playful monkeys and wild jungle cats are just a few of the things you'll find alongside a few super-fun tree frogs. The bold colors are a dazzling palette for your next amazing project, whether it's a new quilt or one of the two cut-and-sew panels inspired by the jungle wildlife - a collection of animal stuffies and an interactive cloth book.

The motifs and colors are sure to put you in a Jungle Paradise state-of-mind.

*moda* FABRICS + SUPPLIES® **AUGUST DELIVERY**

SIH 062 Zig Zag Pink Orange - 68" x 80"



SIH 060 Block Print - 60" x 64"



SIH 062 Zig Zag Green - 68" x 80"



SIH 063 Pineapple Pop - 62" x 84"

[Click Here To Shop This Collection!](#)



# Jungle Paradise

STACY IEST HSU

BOOK & STUFFED ANIMAL PANELS





20781 11

Panel measures approx. 36" x 44"



20780 11

Book Panel 36" x 60"

# Jungle Paradise STACY IEST HSU

OFF WHITE  
9900 200



20783 11\*



20784 11\*

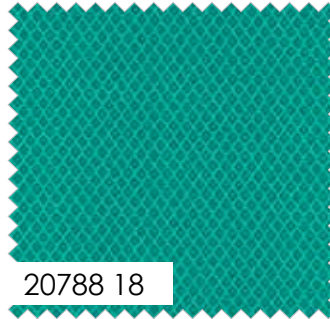
BAYSIDE  
9900 393



20783 18\*



20786 18\*



20788 18



20789 31



20789 18\*

KELLY  
9900 76



20782 18\*



20785 21\*

EMERALD  
9900 268



20785 22



20788 22



20786 22



20783 21



20784 21\*

LEPRECHAUN  
9900 371



20783 22\*



20782 22\*



20785 20



20789 20



20787 20

BELLA SOLID COORDINATES

*moda* FABRICS + SUPPLIES®

**AUGUST DELIVERY**

# Jungle Paradise STACY IEST HSU



20786 19\*



20787 19\*



20789 19



20785 19\*



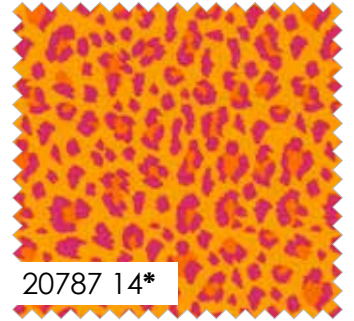
20785 14\*



20789 14



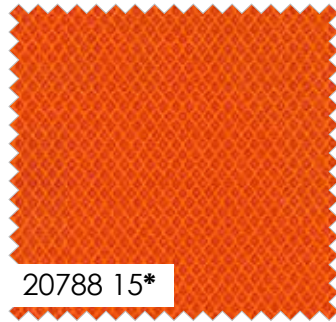
20786 14\*



20787 14\*



20785 15



20788 15\*



20785 16



20782 13



20788 16



20789 16



20784 16\*



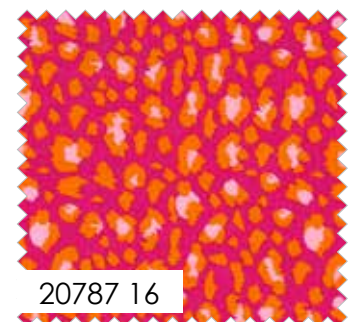
20782 17\*



20787 17\*



20786 17



20787 16

20780

Asst. 15

Asst. 10

Low Cal 10

AB

F8

JR

LC

MC

PP

KIT

AUGUST DELIVERY

•40 Prints •100% Premium Cotton  
JR's, LC's, MC's & PP's include two each of 20789 - 14 & 19.  
Precuts do not include panels.

modafabrics.com 8

SPROUT  
9900 267

ORANGE  
9900 80

CHERRY  
9900 230

AMELIA PINK  
9900 166

POMEGRANATE  
9900 386

BELLA SOLID COORDINATES

BOYSENBERRY  
9900 217