



JUNIPER
BERRY

 BASICGREY®



JUNE
2016
DELIVERY



Juniper Berry covers all the holiday bases from an elegant Christmas Eve to a fun-filled Christmas morning - with every snow-covered memory in between. The vivid hues of poinsettias and pine frolic with the icy blue of a winter sky, and are accented by black and vanilla. Combining woodland creatures, opulent florals and seasonal text prints, Juniper Berry brings an eclectic spirit to all that you create.

basicgrey.com
modafabrics.com





№ 30431 15*
Coal



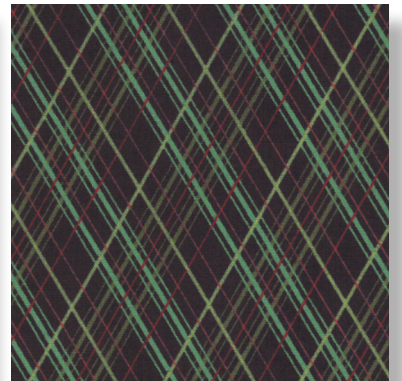
№ 30430 16*
Coal



№ 30432 18
Coal



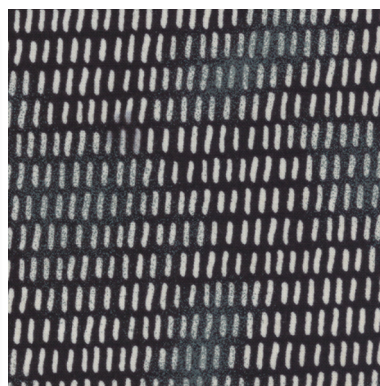
№ 30437 19*
Coal



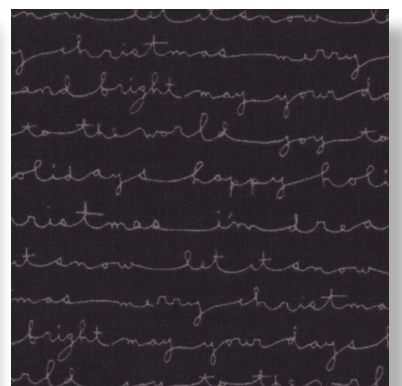
№ 30438 15*
Coal



№ 30435 18*
Coal



№ 30434 16*
Coal



№ 30436 19
Coal

Peanut Butter Blossoms

BY: BASICGREY

INGREDIENTS:

- 1/2 CUP GRANULATED SUGAR
- 1/2 CUP PACKED BROWN SUGAR
- 1/2 CUP CREAMY PEANUT BUTTER
- 1/2 CUP BUTTER OR MARGARINE, SOFTENED
- 1 EGG
- 1 1/2 CUPS GOLD MEDAL™ ALL-PURPOSE FLOUR
- 3/4 TEASPOON BAKING SODA
- 1/2 TEASPOON BAKING POWDER
- ADDITIONAL GRANULATED SUGAR
- ABOUT 36 HERSHEY'S® KISSES® BRAND MILK CHOCOLATES, UNWRAPPED

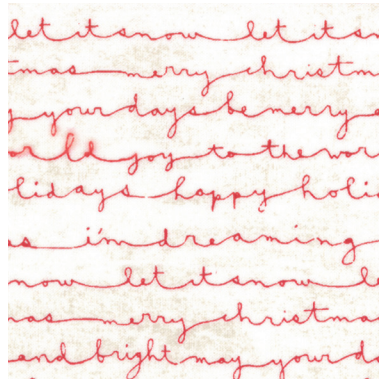
1. HEAT OVEN TO 375°F. IN LARGE BOWL, BEAT 1/2 CUP GRANULATED SUGAR, THE BROWN SUGAR, PEANUT BUTTER, BUTTER AND EGG WITH ELECTRIC MIXER ON MEDIUM SPEED, OR MIX WITH SPOON, UNTIL WELL BLENDED. STIR IN FLOUR, BAKING SODA AND BAKING POWDER UNTIL DOUGH FORMS.
2. SHAPE DOUGH INTO 1-INCH BALLS; ROLL IN ADDITIONAL GRANULATED SUGAR. ON UNGREASED COOKIE SHEETS, PLACE ABOUT 2 INCHES APART.
3. BAKE 8 TO 10 MINUTES OR UNTIL EDGES ARE LIGHT GOLDEN BROWN. IMMEDIATELY PRESS 1 MILK CHOCOLATE CANDY IN CENTER OF EACH COOKIE. REMOVE FROM COOKIE SHEETS TO COOLING RACK.



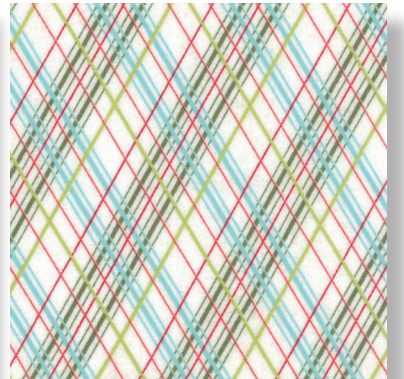
No 30435 11
Winter Red



No 30433 12
Poinsettia Red



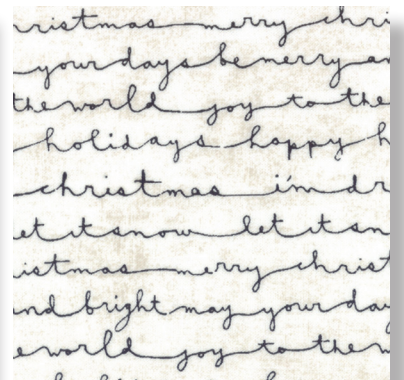
No 30436 11
Vanilla Red



No 30438 11*
Winter Vanilla



No 30437 11*
Winter Vanilla



No 30436 12*
Vanilla Coal



No 30431 11*
Winter Vanilla



No 30430 12*
Winter Vanilla

the **Cookie** exchange

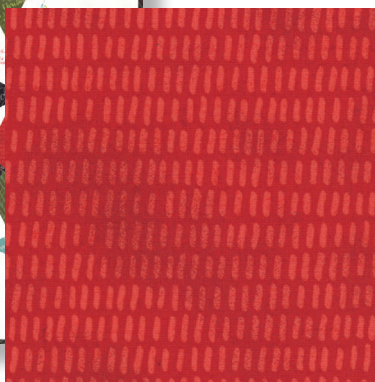
RECIPES FROM YOUR FAVORITE DESIGNERS



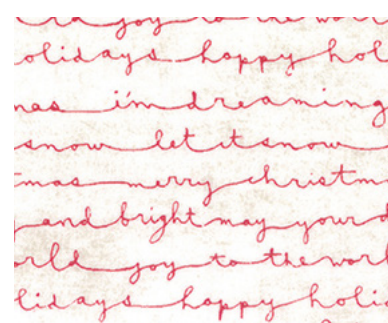


**108"
QUILT
BACKS**

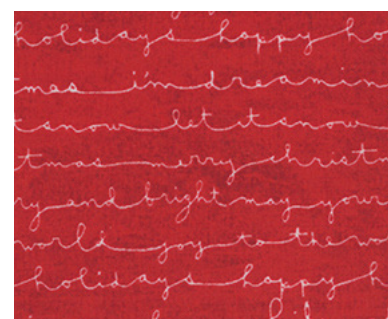
Quilt Pattern
 № RQC 133 / RQC 133G
 Sparkle
 Size: 75" x 75"
F8 Friendly
 pattern by Miss Rosie's Quilt Co.



№ 30434 15
Poinsettia Red



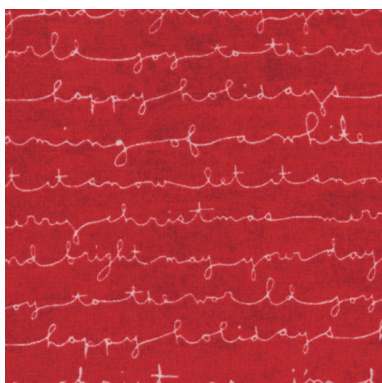
№ 11116 11
Vanilla Red



№ 11116 17
Poinsettia



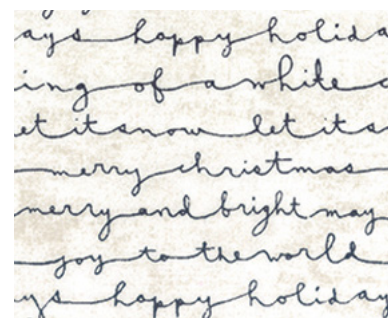
№ 30435 17
Poinsettia Red



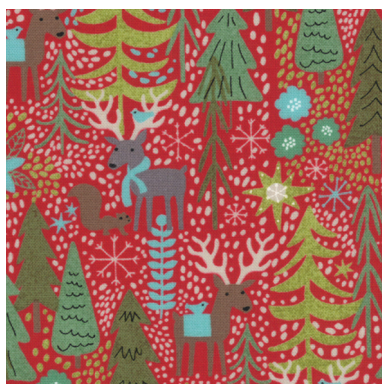
№ 30436 17
Poinsettia Red



№ 30435 16*
Rosey Cheeks



№ 11116 12
Vanilla Coal



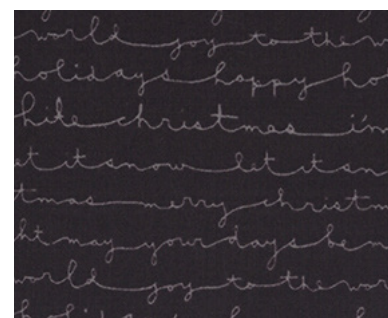
№ 30430 15
Poinsettia Red



№ 30431 14*
Poinsettia Red



№ 30432 16*
Poinsettia Red



№ 11116 19
Coal

GRUNGE

BASICGREY®

Nº 30150 265
Cherry



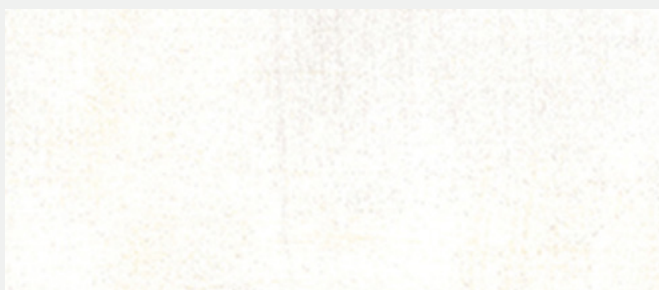
Nº 30150 97
Kelp



Nº 30150 60
Blue



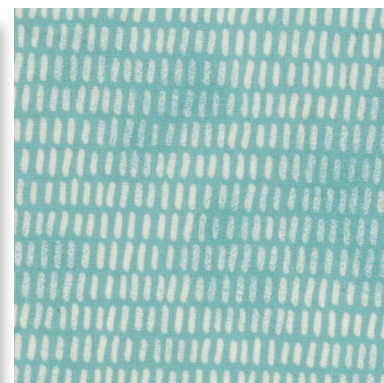
Nº 30150 91
Vanilla



Nº 30150 165
Black Dress



Nº 30435 12
Winter Sky



Nº 30434 12
Winter Sky



Nº 30436 13*
Winter Sky



Nº 30433 13
Winter Sky



Nº 30431 12*
Winter Sky



Nº 30432 13*
Winter Sky



Nº 30430 13
Winter Sky



Nº 30437 12
Winter Sky



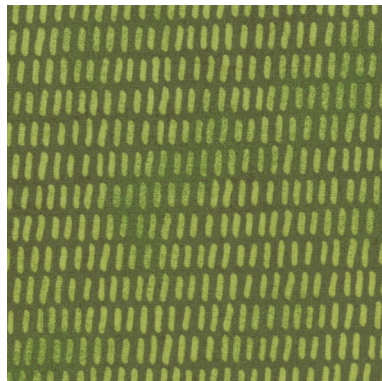
No 30431 13
Pine



Quilt Pattern
 No AQD 0251 / AQD 0251G
 Juniper Berry
 Size: 64" x 80"
LC Friendly
 pattern by Antler Quilt Designs



No 30437 15*
Pine



No 30434 13*
Pine



No 30435 15
Pine



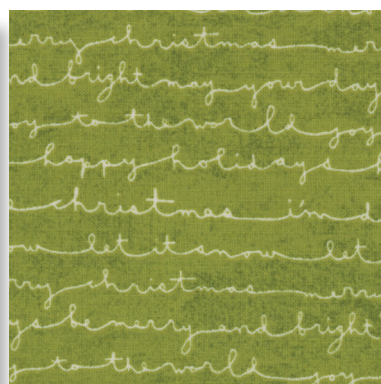
No 30430 14
Pine



No 30438 13
Pine



No 30432 14*
Elf



No 30436 15
Elf



No 30433 11
Elf

30430

Asst. 15

Asst. 10

Low Cal 10

AB

F8

JR

LC

MC

PP

• 40 Prints • 4 Quilt Backs • 100% Premium Cotton
 Grunge is not included in the Assortments or Precuts

Delivery: June, 2016