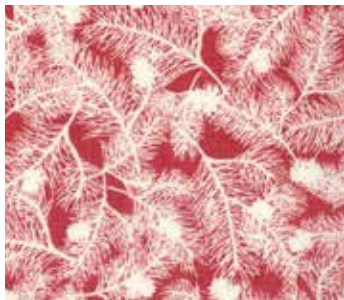


Welcome new designers, Kate and Birdie!

WINTER'S LANE

KATE & BIRDIE PAPER CO.

Kate & Birdie's debut line for Moda is a wonderland of icy blues, berry reds, and woolly charcoal greys. Inspired by wintery branches, snow-covered forests and woodland critters, this cozy collection pulls from Kate & Birdie's most loved holiday paper goods to create a warm, nature-inspired palette perfect for snowy days.



13094 18 Berry



*13093 13 Berry



*13096 13 Berry



*13093 15 Grey



13092 15 Grey



13096 15 Grey



PS13090 – Winter's Lane

project sheet

PS13090 – Winter's Lane

Yardage		1Q	10 Qs
13090-12	Panel	1	10
13096-13	Backing	1¼	12½
20000	Fast 2 Fuse		
Double Sided Interfacing		¾	7½

Also needed

16 small buttons for embellishing



13091 15 Grey

- running yardage
- double border



*13095 15 Grey



*13094 17 Grey

Fabrics with * included in low cal assortment

Bella 9900 230 / Cherry

Bella 9900 177 / Hometown Sky

Bella 9900 128 / Stone

Panel 24"x45"—Pillow Panel approx. 22"x22"
Postcards approx. 5"x7" Tags approx. 3"x5"

Bella Solids are not included in Precuts or Assortments.



13090 12 Berry



13090 14 Grey



13092 16 Snow



13095 16 Snow



13090 13 Mint



*13091 16 Snow



*13094 19 Mint



*13096 12 Snow



13093 14 Mint



*13096 14 Mint



*13092 14 Mint



*13091 14 Mint

moda



13095 14 Mint

13090

Asst. 15

Asst. 10

Low Cal 12

AB

JR

LC

PP

- 22 Prints
- 100% Premium Cotton

AB's include one panel - 13090-12 JR's, LC's & PP's do not include panels.
JR's, LC's & PP's include two each of all and three of 13096-11 & 13

Delivery: June, 2013