

# Echo Stars using Effie's Woods by Deb Strain

## By Neverlandstitches by Lisa Jo Girodat

When I saw Deb Stain's collection Effie's Woods, my heart melted as my son & daughter-in-law had announced that they were expecting in September of 2021. As they had decided not to find out the gender of the new arrival, I knew I would have to make a gender-neutral quilt and this was absolutely a joy to work with.. Well, the newest family member is a little girl, Zoey. As you can see from the photos the collection, Effie's Woods is a perfect match for the nursery

Note:

Read all directions before you begin.

All seams are  $\frac{1}{4}$  ".

Press seams to the darker fabric

### Yields:

Finished Quilt: 59 x 65 inches

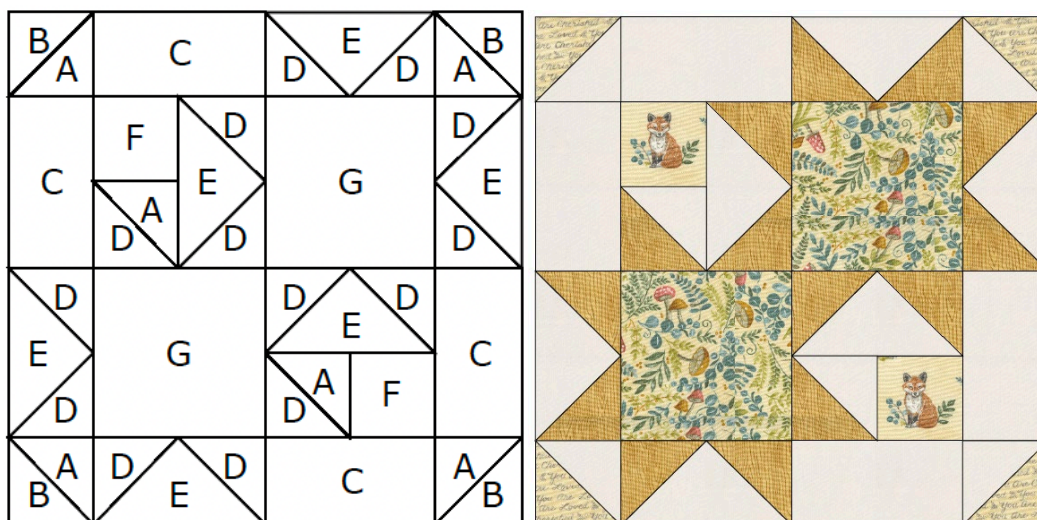
Finished Block: 18"

### Fabric Requirements:

*Yardage is based on 42" wide fabric.*

- 2 yards of background fabric {9900-127 Moda Bella Solid Feather}
- 1 fat quarter of Fabric 1 {56013-12 – yellow words}
- 1 fat quarter of Fabric 2 {56011-12 – yellow critters}
- $\frac{1}{2}$  yard of Fabric 3 {56018-13 – yellow wood grain}
- $\frac{1}{2}$  yard of Fabric 4 {56012-12 – yellow foliage}
- 1 fat quarter of Fabric 5 {56013-14 – green words}
- 1 yard of Fabric 6 {56011-14 – green critters}
- $\frac{1}{2}$  yard of Fabric 7 {56018-17 – green wood grain}
- $\frac{1}{2}$  yard of Fabric 8 {56012-14 – green foliage}
- 0.75 yard of fabric for binding
- 4 yards of fabric for quilt backing

**Make 9 Echo Stars (make 5 yellow stars blocks and 4 green star blocks):**



For the five yellow stars cut the following:

Background fabric:

[2] 4 inch WOF (width of fabric) strips

- Sub cut into [15] 4 inch squares {A}

[4] WOF 3.5 inch strips

- sub cut into [20] 3.5 x 6.5 inch rectangles {C}

[2] WOF 7.25 inch strips

- sub cut into [8] 7.25 inch squares {E}

Fabric 1 (yellow words)

[10] 4" squares {B for half square triangles HST}

Fabric 2 (yellow critters)

[10] 3.5 inch squares

Fabric 3 (yellow wood grain)

[4] 4 inch WOF strips

- sub cut into [37 = 32 for 4 at a time flying geese + 5 for HSTs] 4 inch squares

- draw a line diagonally from corner to corner on the wrong side of each square

Fabric 4 (yellow foliage)

[2] 6.5 inch WOF strips

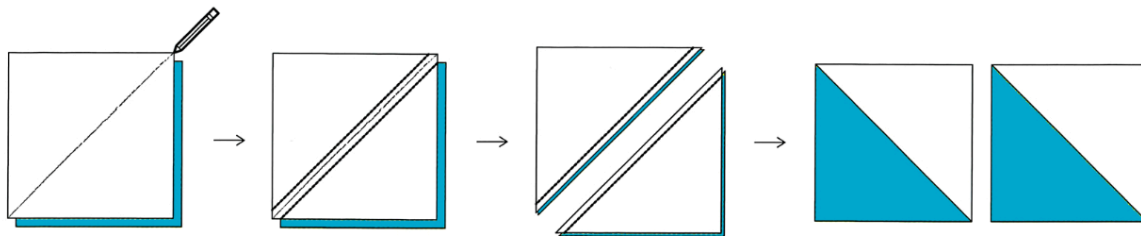
- sub cut into [10] 6.5 inch squares

### Make 20 half square triangles for the block corners.

You will need [10] 4 inch background squares and [10] 4 inch squares of Fabric 1

Draw a diagonal line on the wrong side of the yellow word fabric 1's 4-inch squares.

Place (1) 4-inch square of background fabric right sides together with a 4-inch square of yellow word fabric square. Sew  $\frac{1}{4}$ " away from each side of the marked line. Trim apart on the line and press. Trim to  $3\frac{1}{2}$  inches square.



### Make 10 half square triangles for the stars

You will need [5] 4 inch background fabric squares and [5] 4 inch squares of Fabric 3

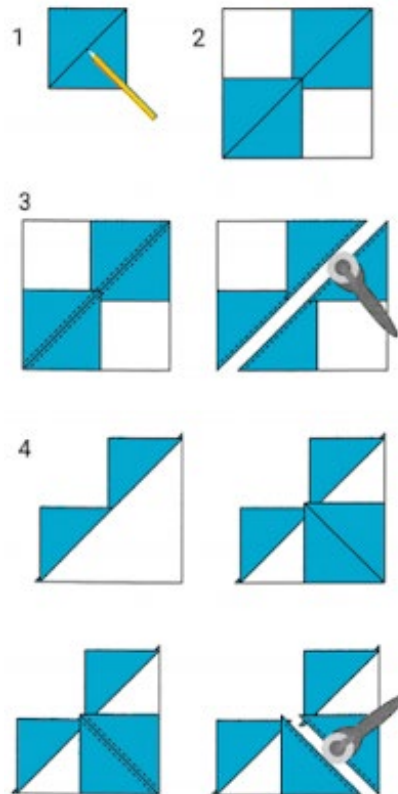
Draw a diagonal line on the wrong side of the yellow word wood grain Fabric 3's 4-inch squares. Place (1) 4-inch square of background fabric right sides together with a 4-inch square of yellow wood grain fabric square. Sew  $\frac{1}{4}$ " away from each side of the marked line. Trim apart on the line and press. Trim to  $3\frac{1}{2}$  inches square.

### Make 32 Flying Geese using the 4 at a time no waste method

**(Note: you will have 2 extra flying geese)**

You will need the [8] 7.25 inch squares of background fabric and [32] 4 inch squares of Fabric 3

- Draw a diagonal line from corner to corner on the wrong side of the 32 4-inch background fabric squares.
- Align two of the 4 inch Fabric 3 squares on opposite corners of the 7.25" coral square {C} with right sides together.
- Sew ¼" on each side of the drawn line. Cut along the drawn line to form two units. Press open.
- Place a Fabric 3 4-inch square with a diagonal line drawn on the back with right sides together on the newly formed units so that the drawn line is going from the section of fabric pressed out to the corner of the unit. (see illustration below).
- Sew ¼" on each side of the drawn line. Cut long the drawn line. Press open.
- Trim the flying geese to 3.5 x 6.5-inches.



**Assemble the Block**

Four Each block you need:

[4] 3.5 inch HST's of background and word fabric

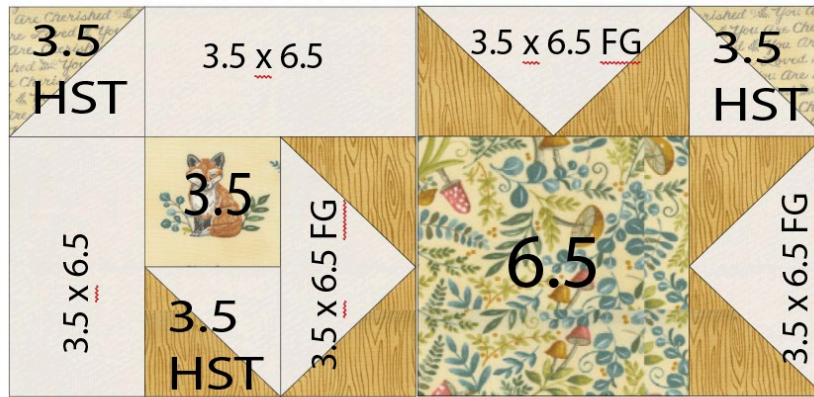
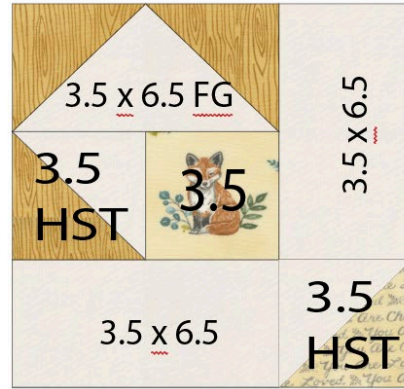
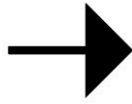
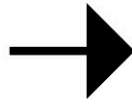
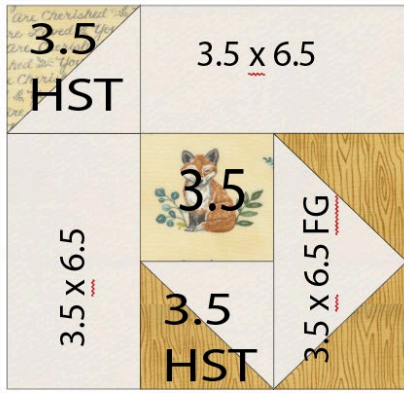
[6] 3.5 x 6.5 inch background fabric and wood grain fabric flying geese

[4] 3.5 x 6.5 inch background fabric rectangles

[2] 3.5 inch squares of critter fabric

[2] 6.5 inch foliage fabric squares

There are 4 sections to each block. Please follow the illustrations for block assembly.



The blocks should each measure 18.5" square.

### Make 4 Green Echo Stars

For the four green stars cut the following:

Background fabric:

[2] 4 inch WOF (width of fabric) strips

- Sub cut into [25] 4 inch squares {A}

[3] WOF 3.5 inch strips

- sub cut into [16] 3.5 x 6.5 inch rectangles {C}

[1] WOF 7.25 inch strips

- sub cut into [6] 7.25 inch squares {E}

Fabric 6 (green words)

[8] 4" squares {B for half square triangles HST} {B}

Fabric 6 (green critters)

[8] 3.5 inch squares {F}

Fabric 7 (green wood grain)

[3] 4 inch WOF strips

- sub cut into [28] 4 inch squares (24 for 4 at a time flying geese & 4 for HSTs) 4 inch squares

{D}

- draw a line diagonally from corner to corner on the wrong side of each square

Fabric 8 (green foliage)

[2] 6.5 inch WOF strips

- sub cut into [8] 6.5 inch squares {G}

Follow the directions for the Yellow Echo Stars to make 4 Green Echo Stars.

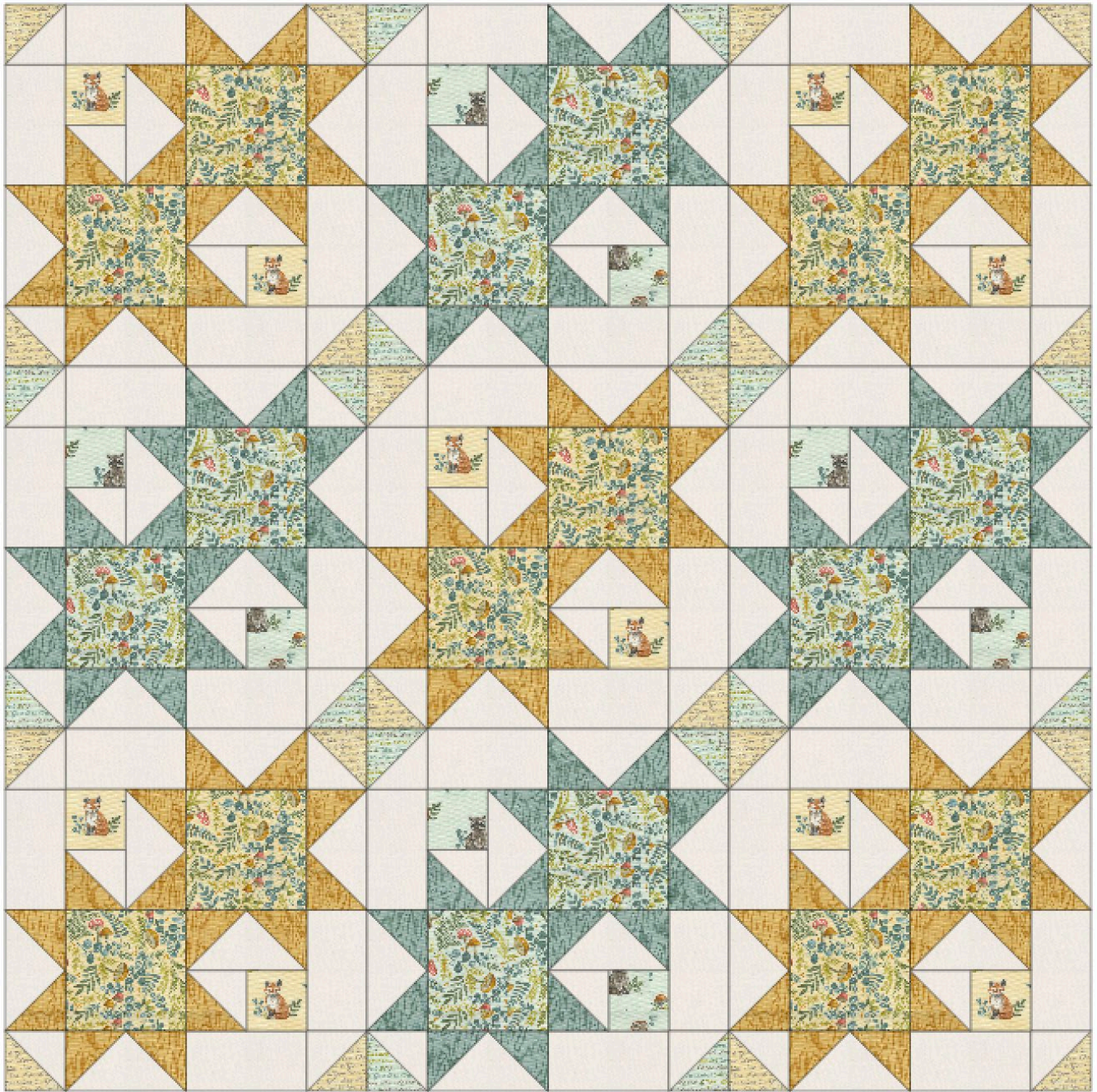
Note:

1. Make [16] 3.5 inch HST's with the background fabric and Fabric 6 (green words)
2. Make [24] 3.5 x 6.5 inch flying geese with the background fabric and Fabric 7 (green wood grain)
3. Make [8] 3.5 inch. with the background fabric and Fabric 7 (green wood grain)

The blocks should each measure 18.5" square.

### Assembling the quilt top

Alternate the yellow and green blocks for the quilt top as shown in the illustration below:



The quilt top will now measure 54 inches square.

**Add the borders:**

- Cut [3] 3 inch WOF strips
- Join two of the 3 inch WOF strips and trim to 54.5 inches. Use the remainder and join to the remaining 3 inch WOF strip. Trim to 54.5 inches. Sew the 54.5 inch strips to the left and right side of the quilt top.
- Cut [3] 6 inch WOF strips
- Join two of the 3 inch WOF strips and trim to 59.5 inches. Use the remainder and join to the remaining 3 inch WOF strip. Trim to 54.5 inches. Sew the 59.5 inch strips to the top and bottom of the quilt top.
- The quilt top should measure 59.5 x 65.5 inches, including seam allowances.

**FINISHING THE QUILT**

Layer the quilt top with batting and backing; baste the layers together.  
The quilt shown is machine quilted using an allover design  
Bind as desired.

If you make any of the quilts, please tag me on Instagram, @neverlandstitches.